



LAKELAND CHIROPRACTIC

▪ LIFETIME FAMILY WELLNESS ▪

Scoliosis and Early Detection

Many schools perform routine spinal screenings to detect scoliosis, also known as "curvature of the spine." But did you know that chiropractors are uniquely qualified to perform these spinal screenings because of their extensive education and training?

Early detection is critical in terms of treating scoliosis to obtain the best possible outcome. Scoliosis occurs 8 – 10 times more frequently in girls than in boys. There are several tests that you can conduct at home to determine whether your child should be checked further. You can measure your daughter's hem length, from the bottom of the hem to the floor, to determine whether it is of equal length all the way around. You can also take a look at the bottom of your child's shoes to check for signs of uneven wear.

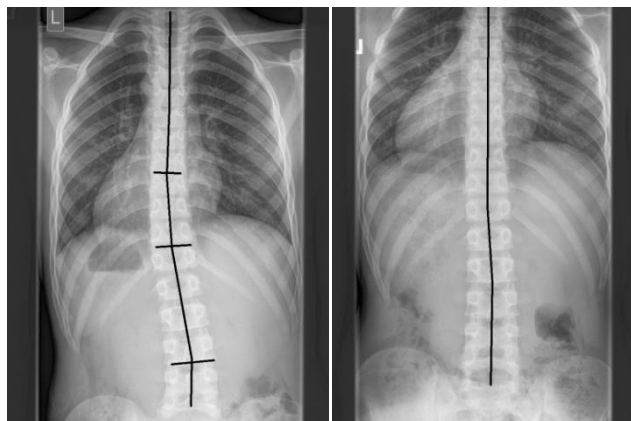
When we screen a child for scoliosis, these are the symptoms we look for:

- Your child's head is not centered over his/her body
- One shoulder is higher than the other; one shoulder blade is higher or stands out more than the other
- Hips are uneven or one is more prominent than the other
- Spine is obviously curved when viewed from both a standing straight and bending over position

Left undetected, scoliosis tends to get worse over time, often requiring braces, or even surgery, depending on the severity of the curve and the presence of new symptoms, such as difficulty breathing or back pain.

Chiropractors use specific adjustments and exercises to help reduce the degree of curvature in your child's spine. They can achieve significant success in many children when their scoliosis is discovered in its early stages, keeping in mind that bones continue to grow – often into the early 20's.

If you or someone you know would like to have a child checked for early scoliosis detection, please give our office a call, or have them give us a call, so we can set up a screening.



Before Care

After Corrective Care

**** Who do you know that could benefit from Chiropractic Care? ****

SHARE WITH FRIENDS, FAMILY, AND CO-WORKERS

▪ LAKELAND CHIROPRACTIC IS DEDICATED TO SERVING THE COMMUNITY THROUGH CONSERVATIVE CARE AND PATIENT EDUCATION ▪

220 South Business Park Drive Unit A-4 Oostburg, WI 53070 **phone** 920.564.6061 **fax** 920.564.6081